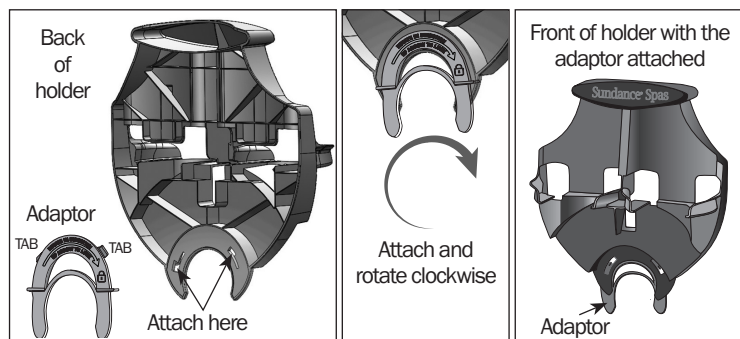
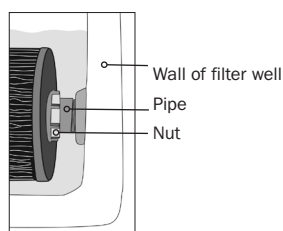
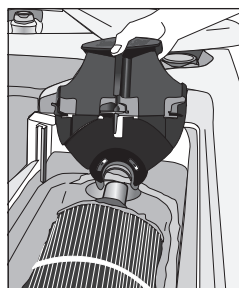


Installing FROG @ease on Sundance Series 880 Spas

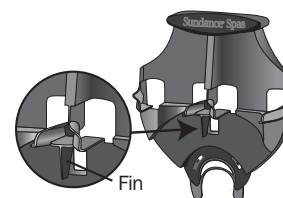
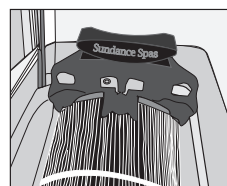
1. Remove the filter lid.
2. Attach the adaptor to the back of the holder by inserting the tabs on the adaptor into the large opening in the holder and rotating clockwise until it clicks in place.



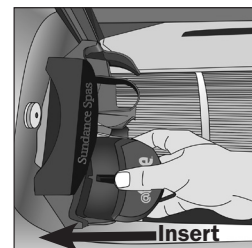
3. **Installing the FROG @ease Cartridge Holder:** With the filter cartridge in place, slide the holder down over the pipe where the nut is that holds the filter cartridge on.



4. Make sure the openings for the FROG @ease cartridges are facing the filter area and the fin on the holder goes between two pleats on the filter cartridge. Push the holder down using the top handle until it snaps in place.

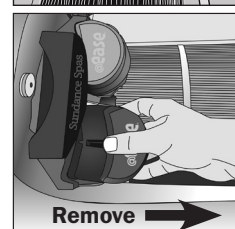


5. **Inserting the FROG @ease Mineral Cartridge into the Holder:** Place the bottom of the rounded edge of the cartridge into the front of the holder opening closest to the outside of the hot tub and push the cartridge back until it locks into place.



6. Follow the same procedure to insert the FROG @ease SmartChlor Cartridge in the opening closest to the inside of the hot tub.

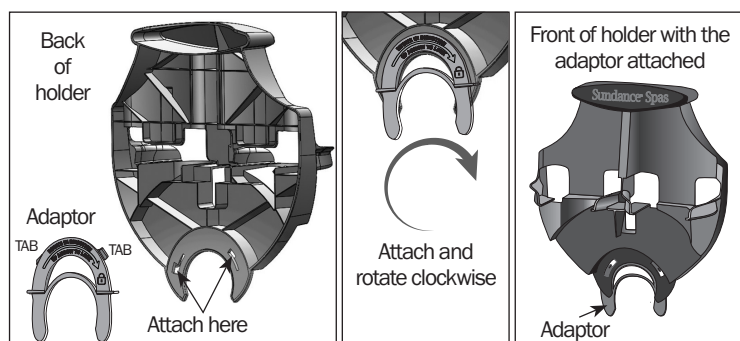
Note: To remove cartridges tilt away from the holder by pulling at the center top of the cartridge rather than the sides.



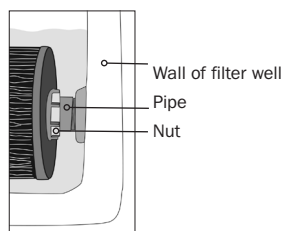
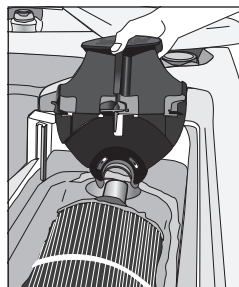
7. Make sure the cartridges are completely under water. If not, add water to the hot tub.
8. Re-install the filter lid.

Installing FROG @ease on Sundance Series 880 Spas

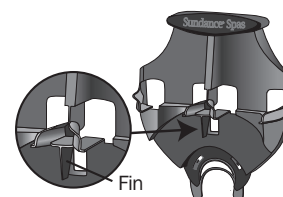
1. Remove the filter lid.
2. Attach the adaptor to the back of the holder by inserting the tabs on the adaptor into the large opening in the holder and rotating clockwise until it clicks in place.



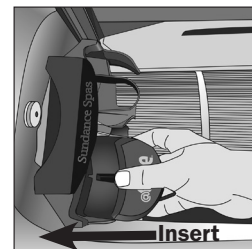
3. **Installing the FROG @ease Cartridge Holder:** With the filter cartridge in place, slide the holder down over the pipe where the nut is that holds the filter cartridge on.



4. Make sure the openings for the FROG @ease cartridges are facing the filter area and the fin on the holder goes between two pleats on the filter cartridge. Push the holder down using the top handle until it snaps in place.

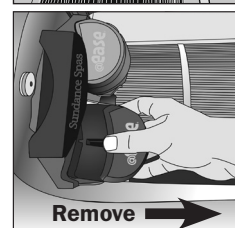


5. **Inserting the FROG @ease Mineral Cartridge into the Holder:** Place the bottom of the rounded edge of the cartridge into the front of the holder opening closest to the outside of the hot tub and push the cartridge back until it locks into place.



6. Follow the same procedure to insert the FROG @ease SmartChlor Cartridge in the opening closest to the inside of the hot tub.

Note: To remove cartridges tilt away from the holder by pulling at the center top of the cartridge rather than the sides.



7. Make sure the cartridges are completely under water. If not, add water to the hot tub.
8. Re-install the filter lid.