



Sanitizing System Operating Instructions for Bullfrog Spas®

FROG® @ease® and FROG @ease XL™ are hot tub sanitizing systems* custom designed for Bullfrog Spas that takes the guess work out of water care so you always feel at ease while enjoying your hot tub.

Triangle Cartridges



Blue - FROG @ease Mineral Cartridge
Silver - FROG @ease SmartChlor® Cartridge (180 gr)

Rounded Cartridges



Blue - FROG @ease Mineral Cartridge
Silver - FROG @ease SmartChlor® Cartridge (180 gr)
Silver - FROG @ease XL SmartChlor® Cartridge (300 gr)

The combination provides the Fresh Mineral Water[∞] benefits of cleaner, clearer and softer® water that's easier to take care of.

FROG @ease Mineral Cartridge

Active Ingredient:
Silver Chloride0.5%
Other Ingredients:99.5%
Total:100.0%

**KEEP OUT OF REACH OF CHILDREN
CAUTION**

DIRECTIONS FOR USE: It is a violation of Federal Law to use this product in a manner inconsistent with its labeling. For use in hot tubs up to 600 gallons. Use with the FROG @ease SmartChlor Cartridge in the FROG @ease Sanitizing System for Bullfrog Spas. Ensure all hot tub equipment is working properly. Operate the pump and filter as recommended by your hot tub manufacturer. Clean filter following manufacturer's directions. May be used with a previously filled hot tub unless it was sanitized with bromine or biguanides. Then drain and fill the hot tub with fresh water before using this product.

Read entire operating instructions for complete directions for use.

Step 1: Prepare the Hot Tub

1. Fill hot tub with fresh water. If using source water that is high in calcium, iron or other metals, see your dealer before filling the hot tub. It may require the use of a metal control product.

If previously using bromine and switching to FROG @ease System, you must drain and refill your hot tub before using this product.

If previously using dichlor you may convert to FROG @ease System without having to drain the hot tub, as long as cyanuric acid level is below 80 ppm.

2. Clean or replace filter cartridges when dirty (Follow manufacturer's instructions).

3. Balance water by following STEPS a - d in order.

IMPORTANT: Always follow printed instructions on the balancing chemical packages. Add balancing chemicals in small increments one at a time with the jets on and wait 6 hours before testing again and adding any additional balancing chemicals.

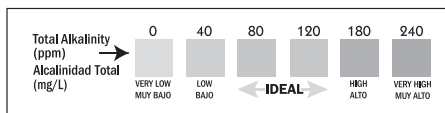
Water Balance Guidelines

pH: 7.2 - 7.6
Total Alkalinity: 80 - 120 ppm
Hardness: 150 - 250 ppm
Total Dissolved Solids: <1500
Cyanuric Acid: 0 - 50 ppm

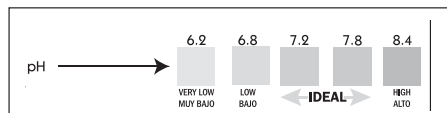
a. Take a water sample from the hot tub and dip a FROG @ease Test Strip into it.



b. Look at the **Total Alkalinity** reading first. Adjustments should be made to bring the Total Alkalinity in the **range of 80 - 120 ppm** prior to making any adjustments to pH even if it throws pH off further.



c. After Total Alkalinity is in range, **test for pH**. It should be **between 7.2 and 7.6**. If higher or lower, add a pH adjuster.



d. Lastly **test for Hardness**. It should be **between 150 and 250 ppm**. If higher, partially drain the hot tub (about 6 inches) and fill with water low in calcium. If lower, add Calcium Increaser.

If balancing takes longer than 2 days shock the water and maintain a chlorine level while continuing balancing.

4. **Very Important!** After balancing and before using cartridges, establish an initial residual of 0.5 - 1.0 ppm free chlorine with FROG® Jump Start® start-up shock, included in this package, that quickly dissolves with an effervescent fizzing action - one packet per 600 gallons.



5. Heat water to the manufacturer's recommended temperature.

Step 2: Set the Cartridges

1. Remove the FROG @ease SmartChlor Cartridge from its bag before proceeding.

2. Set the FROG @ease Mineral Cartridge to the highest setting using the dial on the bottom of the cartridge. No further adjustments are necessary for the life of the cartridge.

3. Set the FROG @ease SmartChlor Cartridge to the setting that matches your hot tub model number and the type of cartridge being used.

For Triangular Shaped Cartridges	Setting #
A5L, R5L	1
A6, A6L, M6, R6, R6L, STIL5, X6L, X7, X7L	2
A7, A7L, M7, M8, R7, R7L, R8L, STIL7, X8, X8L	3
A8, A8D, A8L, A9L, M9, R8,	4

For Round Shaped Cartridges	Setting #
A5L	2
A6, A6L, STIL5, X6L	3
X7, X7L	3
A7, A7L, STIL7	3
M7, X8, X8L	4
A8D, A8L, M8	4
A9L, M9	5

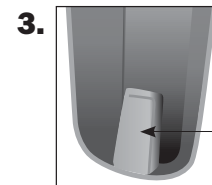
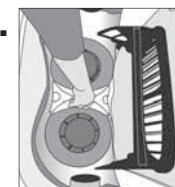
If needed, you may increase or decrease the dial setting. Once set, the FROG @ease SmartChlor Cartridge will maintain a low 0.5 to 1.0 ppm chlorine level as long as the pH stays within 7.2 and 7.6 so typically there is little need to adjust the cartridge setting.

Step 3: Put the System to Work

Between Filter Cartridges

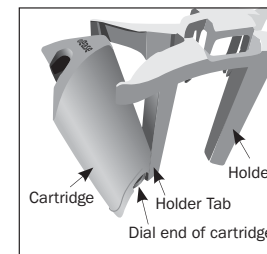
1. Remove filter snap cap.

2. Hold weir door/filter plate out into the hot tub slightly or remove from hot tub. If cartridge holder is already installed between the filter cartridges, remove by pulling up on the handle.

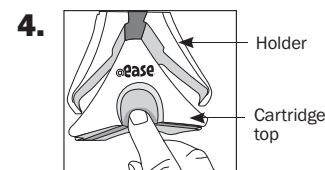


3.

Detail of Cartridge Holder Tab



Snap the FROG @ease Mineral Cartridge into one opening of the cartridge holder. With the @ease logo facing the holder, put the dial end of the cartridge into the holder first by connecting the tab on the holder with the indent in the cartridge.



Then push the top part of the cartridge in until it snaps into place

5. Follow the same procedure for the FROG @ease SmartChlor Cartridge into the other opening.

6. With the silver FROG @ease SmartChlor Cartridge facing the inside of the hot tub, insert cartridge holder between the filter cartridges under the weir door/filter plate pushing down until it stays in place.

FROG @ease Mineral Cartridge

FROG @ease SmartChlor Cartridge

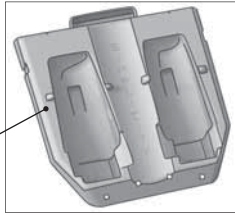


7. Replace filter snap cap.

Using the Simplicity Filter System

1. Turn off main power to the hot tub and remove the JetPak to the right of the main control.

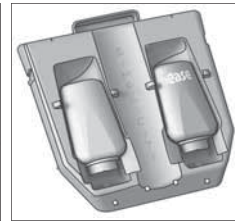
Simplicity Filter System



2. Insert FROG @ease Mineral Cartridge and FROG @ease SmartChlor Cartridge into the two openings on the outside of the filter system. Push cartridges in until they are latched.

FROG @ease System

FROG @ease XL System

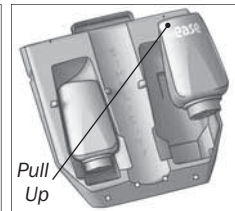
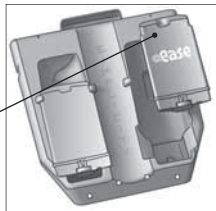


3. To remove cartridges, pull up at the top of cartridge and lift out.

FROG @ease System

FROG @ease XL System

Pull Up



4. Replace JetPak.

Replacing Cartridges

Replace FROG @ease Mineral Cartridge every four months, or when draining and refilling hot tub.

Discard it in the trash even though you will hear the spent media left inside. Don't attempt to reuse: the minerals are spent after 4 months.

Replace FROG @ease SmartChlor Cartridge when empty based on the FROG @ease Test Strip showing a lighter color than the out indicator on the bottle. The life of the cartridge varies depending on hot tub size and number of users. FROG @ease SmartChlor Cartridge will last about 3-4 weeks for an average 400 gallon hot tub. Drain water from cartridge to ensure it is empty. Discard in trash or offer for recycling if available.

Step 4: Routine Hot Tub Care

1. Drain and refill hot tub as directed by your hot tub manufacturer. Whenever you drain and refill, make sure to replace your FROG @ease minerals.



2. Run filtration system as recommended by your hot tub manufacturer to maintain proper water flow through the system.



3. Regularly test water with FROG @ease Test Strips and follow directions in Step 1 for maintaining pH, Total Alkalinity and Hardness.



NOTE: pH is affected by bather load, chemicals used, evaporation and the make-up of your source water so maintaining water balance regularly is important.

Troubleshooting

Cloudy Water or Low-Chlorine Levels

- Shock the hot tub with FROG Maintain, a non-chlorine shock.
- Check water balance. pH and Total Alkalinity need to be in the proper ranges for the FROG @ease System to work correctly.
- Check FROG @ease SmartChlor Cartridge and replace if empty—see instructions under Step 3: Put the System to Work.
- If FROG @ease SmartChlor Cartridge is not empty, turn dial setting up one number while maintaining water balance. If needed turn dial up again.
- Check your calendar. The entire FROG @ease System including a FROG @ease Mineral Cartridge needs to be replaced every four months. Without the minerals, SmartChlor will not be enough to sanitize the hot tub.

FROG @ease SmartChlor Cartridge Life

- If hot tub is larger than 400 gallons with significant bather load, you

4. FROG @ease SmartChlor Cartridge will maintain 0.5-1.0 ppm free chlorine level as long as the water is balanced. **NOTE: Free Chlorine levels are reduced up to 75%* when using FROG @ease Minerals.**

NOTE: Why FROG @ease Test Strips? The FROG @ease SmartChlor Cartridge forms a chlorine reserve that will be inaccurately measured as total chlorine on other test strips. Unlike conventional chlorine, the SmartChlor reserve readily shifts to free chlorine as needed, maintaining hot tub health with a low level of chlorine.

5. Shock the hot tub with FROG Maintain®, a non-chlorine shock for easy single-dose shocking when you replace the FROG @ease SmartChlor Cartridge or once a month.



6. Replace your FROG @ease SmartChlor Cartridge and complete FROG @ease System that comes with a FROG @ease Mineral Cartridge as directed under “Step 3: Put the System to Work”.

may require a higher dial setting which will shorten the cartridge life.

- If you think the cartridge setting is too high, you can turn the dial setting down one number while maintaining water balance. If needed, turn dial down again.

High Chlorine Levels

- This is highly unlikely with the FROG @ease System because SmartChlor is self-regulating. However, if you use standard test strips, it may appear that total chlorine is higher than the free chlorine.
- No worries—the strip is measuring the SmartChlor reserve, which will shift to free chlorine as needed. Please always use the FROG @ease Test Strips that were included with your System.

Learn more at frogproducts.com or call 800.222.0169
Register your FROG @ease Sanitizing System at frogproducts.com



Manufactured for King Technology, Inc.

6000 Clearwater Dr, Minnetonka, MN 55343 U.S.A.

800-222-0169 | frogproducts.com

Made in U.S.A. Patents: kingtechnology.com/IP

Ver la versión en español de este manual en frogproducts.com

+ FROG @ease System consists of the FROG minerals silver chloride and carbonate used with 0.5 ppm of FROG @ease SmartChlor Cartridge. The FROG @ease Mineral Cartridge must be used in conjunction with the FROG @ease SmartChlor Cartridge. * Compared to the minimum ANSI recommended chlorine level of 2.0 ppm for a hot tub.

⊙ For pools and hot tubs.

EPA Est. No.: 64114-MN-1

E09220723R5 20-48-0108