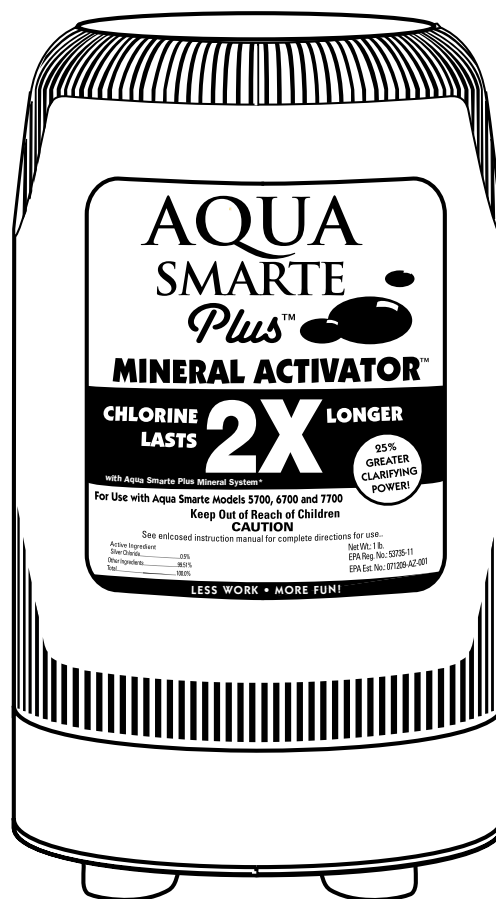


# Aqua Smarte Plus Mineral Activator™

## Patented Mineral Pool Disinfectant

### Operational Instructions



Chlorine lasts 2X longer with AQUA SMARTE Plus Mineral System+

**REPLACE EVERY 6 MONTHS OR AFTER ONE POOL SEASON, WHICHEVER IS SHORTER.**

+Aqua Smarte Plus Mineral System consists of the Aqua Smarte Plus minerals silver chloride and carbonate used in conjunction with 0.5 ppm chlorine. The Aqua Smarte Plus Mineral Activator must be used in conjunction with the Aqua Smarte Plus MizerMax Pac (EPA Reg. No.: 53735-2), an EPA registered chlorine pool product or a chlorine delivery device.

## Swimming Pool Tips



1. Make sure the pool has adequate circulation. The pool water must completely circulate through the pump and filter at least 1 to 2 times per day. This usually requires 8 to 12 hours. Check with your dealer for the proper circulation time for your pool.

2. Before beginning with any pool care program, you must first balance your pool water. Take a water sample to your local pool professional who will test for the following important elements.

### Water Balance Guidelines

pH:	7.2 – 7.8
Total Alkalinity:	60 – 120 ppm
Calcium Hardness:	150 – 400
Total Dissolved Solids:	<1500
Stabilizer:	20 – 80 ppm
Free Chlorine:	0.5 – 1.0 ppm

3. If your fill water is high in metals, use a sequestering agent or metal out at start-up only before using a Mineral Activator. See your local dealer for details on using these products and always follow manufacturers' directions carefully.

4. After your pool is up and running smoothly, continue to test your water for pH, total alkalinity and chlorine with Aqua Smarte Brand Test Strips and maintain its balance by adding any necessary adjustment products (see your dealer for details).



5. Check the pool's filter gauge often and periodically clean filter per the manufacturer's directions. A dirty filter will slow the flow of water which could hamper proper circulation.



## Start-up and Operation - Mineral Activator now with 25% Greater Clarifying Power for easier start up.



1. Add a stabilizer or conditioner to the pool at the beginning of the season if the stabilizer level is below 20 ppm.

This will prevent chlorine burn off. Follow manufacturer's directions carefully.



2. Install an Mineral Activator into the Docking Station or Cycler (see page 3 for directions).



**REPLACE THE MINERAL ACTIVATOR EVERY 6 MONTHS OR AFTER ONE POOL SEASON WHICHEVER IS SHORTER.**

Replace cap and run Docking Station or Cycler, with Mineral Activator inserted, for 10 minutes at Setting 5.

3.



Shock the pool with Shine to rid the water of contaminants (see page 4 for directions).

4.



Create a chlorine residual with Optimize or a chlorine shock (see page 4 for Optimize directions). **THIS STEP IS VERY IMPORTANT TO START-UP.** Always begin with chlorine in the pool water.

5.



For a 90-day algae protection guarantee, insert CANNONBALL! into Mineral Activator in Docking Station or Cycler (see page 4 for directions).

6.



When chlorine reading is down to 1.0 ppm, which may take a few days, insert MizerMax Pac (see page 4 for directions).



### WARNING

If using standard chlorine shock do not add in or near the skimmer or into the Docking Station or Cycler as it could damage equipment, risk potential explosion or discolor your pool surface.

**7. SETTING CONTROL DIAL** Set control dial by matching up the parameters of your pool on the charts below. **THIS IS A STARTING POINT ONLY** and may need to be adjusted to fit your individual pool needs. See #8 for directions.

Above Ground POOL SIZE		8 HOUR PUMP RUN TIME				12 HOUR PUMP RUN TIME				24 HOUR PUMP RUN TIME			
		PUMP SIZE				PUMP SIZE				PUMP SIZE			
Gallons	Diameter	1/2 hp	3/4 hp	1 hp	1 1/2 hp	1/2 hp	3/4 hp	1 hp	1 1/2 hp	1/2 hp	3/4 hp	1 hp	1 1/2 hp
7,000	(18')	5.0	4.5	4.0	3.5	4.5	4.0	3.0	5.0*	3.5	3.0	2.5	4.0*
9,000	(21')	5.5	5.0	4.4	4.0	5.0	4.5	4.0	5.5*	4.0	3.5	3.0	4.5*
12,000	(24')	6.0	5.5	5.0	4.5	5.5	5.0	4.5	4.0	4.5	4.0	3.5	5.0*
15,000		NR	6.0	5.5	5.0	6.0	5.5	5.0	4.5	5.0	4.5	4.0	3.5
20,000		NR	NR	6.0	5.5	NR	6.0	5.5	5.0	5.5	5.0	4.4	4.0

\* – Bypass installation recommended.

NR – This pump size is not recommended for this size pool.

Most common pool size



For the first week test the pool water daily for free chlorine with Aqua Smarte Brand Test Strips to ensure correct dial setting. Continue to test weekly throughout the season.

After testing, adjust the dial up by 1/2 increment if the free chlorine reading has dropped below 0.5 ppm or down by 1/2 increment if the reading has risen above 1.0 ppm. Continue this process each day until the color on the test strip matches the ideal Aqua Smarte range of 0.5 ppm to 1.0 ppm chlorine.



Remember to adjust dial by 1/2 increments only, in order to prevent over chlorination which may bleach pool surfaces.



Shock pool every two weeks or as needed to maintain water quality. Follow directions on the shock treatment used.



#### WARNING

Do not add shock in or near the skimmer or into the Aqua Smarte Plus Docking Station or Aqua Smarte Cycler as it could damage equipment, risk potential explosion or discolor your pool surface.

**If using another means of chlorine - Follow steps 1-5 on Start-up and Operation and then continue below.**



Maintain setting of Maximum, Setting 5 or ON depending on the model. No adjustments needed.

**7.**

Maintain a minimum chlorine reading of 0.5 ppm with a chlorine delivery device or hand feeding.



Shock pool every two weeks or as needed to maintain water quality. Follow label directions on the shock treatment used.



#### WARNING

Do not add shock in or near the skimmer or into the Aqua Smarte Plus Docking Station or Aqua Smarte Cycler as it could damage equipment, risk potential explosion or discolor your pool surface.

## How To Replace the Aqua Smarte Plus™ Components.

### Replacing Mineral Activator

**1.**

The Mineral Activator will fit Aqua Smarte Plus Docking Station Model 7700 and Aqua Smarte Cycler Models 5700 or 6700.

**THE MINERAL ACTIVATOR MUST BE REPLACED EVERY 6 MONTHS OR AFTER ONE POOL SEASON, WHICHEVER IS SHORTER.**

**2.**



**IMPORTANT:**  
Remove and read the inserted information card.

**CAUTION read carefully.**

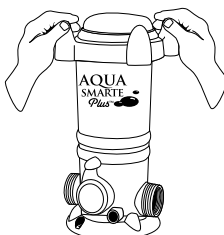
USE ONLY the factory recommended Aqua Smarte Plus replacement products. DO NOT USE bulk chemical tablets in the Aqua Smarte Plus Docking Station or Aqua Smarte Cycler or put anything inside the Docking Station or Cycler other than the appropriate Aqua Smarte Plus product as directed in the product instructions. Warranty will be void if the correct Aqua Smarte Plus products are not used.



**3.**

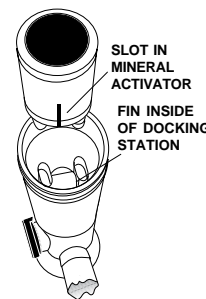
Turn off pump and turn dial to Pac Removal, Setting 0 or OFF depending on the model.

**4.**



Open cap. If using MizerMax Pac stand back to avoid inhaling fumes.

**5.**



Find slot on side of Mineral Activator and line up with fin inside the Docking Station or Cycler. Lower Mineral Activator until secure.

**6.**

Mark your calendar for the six month replacement of the Mineral Activator and approximate replacement times for the MizerMax Pac. **Once wetted, the time-released mineral coating of this product is effective up to 6 consecutive months or one pool season whichever is shorter. After that time even if you hear the spent media inside it is no longer effective and must be replaced.**

## Replacing Aqua Smarte Plus Shine™, Optimize™ or MizerMax Pac™



Shine

Optimize

MizerMax Pac

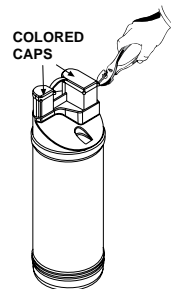


### WARNING

Avoid sparks, open flame or smoking when handling the Aqua Smarte Plus Shine, Optimize and MizerMax Pac.

Shine is a one time start-up product used to rid the water of contaminants. Optimize - also used at start up, sets the chlorine residual to help find the proper dial setting for maintaining up to 50%\* less chlorine while using the MizerMax Pac (EPA Reg. No.:53735-2). All three products sold separately.

1.



COLORLED CAPS

To remove colored caps, grab onto the lip of one cap with a pliers and pull up until cap releases. Repeat the process for the other cap.

2.



Turn Pac over and shake slightly until ingredients fall into tower areas.

PAC TOWERS

3.



Aqua Smarte Plus Mineral Activator

PAC

Line up the small leg of the MizerMax Pac with the small opening in the Mineral Activator and the large leg with the large opening. Lower MizerMax Pac into Mineral Activator until secure.

4.



Replace cap by hand only. **DO NOT OVER TIGHTEN.**

5.

Run the pump and filter for each pac according to the directions on the product label. Remove from the Docking Station or Cycler when empty and discard or offer for recycling.

## Replacing Aqua Smart Plus CANNONBALL!™ For a preventative dose, add one for pools up to 15,000 gallons or two for pools between 15,000 and 30,000 gallons.

See CANNONBALL! product labeling for complete directions for use (EPA Reg.: No. 53735-9).

1.



Remove cap from CANNONBALL! without removing seal.

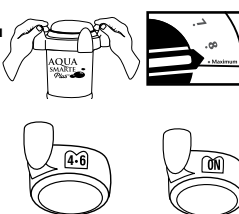
**NOTE:** Wait 24 hours after shocking before using CANNONBALL!. Avoid adding other chemicals until this product has been circulated (filtered) for at least 24 hours.

2.



Insert upside down into center of Mineral Activator pushing down firmly on key to puncture seal.

3.



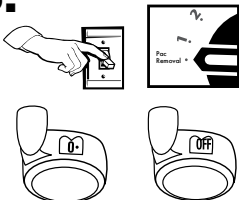
Replace cap by hand only. **DO NOT OVER TIGHTEN.** Turn control dial to Maximum, Setting 5 or ON depending on the model.

4.



Turn pump on for 90 minutes allowing CANNONBALL! to circulate through pool.

5.



To remove CANNONBALL!, turn pump off, turn dial to Pac Removal, Setting 0 or OFF depending on the model, remove Docking Station or Cycler cap.

6.



Lift CANNONBALL! up and allow any water in the container to drain through the System before recycling or discarding in trash. **NOTE:** If water shows more than a hint of blue inside Docking Station or Cycler, replace the cap, turn dial to Maximum, Setting 5 or ON and run the pump for one minute.

**6A.** If pool size requires additional CANNONBALL!, repeat steps 1-6.

**6B.** When water is clear in Docking Station or Cycler proceed to Install MizerMax Pac.

**For an easy two-step pool closing program, use AQUA SMARTE Plus Shine and Cannonball! following the directions above.**

\*Compared to the minimum EPA recommended chlorine level of 1.0 ppm for a stabilized swimming pool.

**KING TECHNOLOGY, INC.**

530 11th Avenue South, Hopkins, MN 55343 U.S.A. 952-933-6118 • 800-222-0169 • FAX 952-933-2206 • www.kingtechnology.com

U.S. Patents 6,210,566; 6,217,892; 6,383,507; 6,544,415; 6,551,609; 6,652,871 and other U.S. and Foreign Patents Pending.  
EPA Reg. No.: 53735-11 EPA Est. No.: 071209-AZ-001

E063011553101143N 20-48-0171